



**PRODUCTION
AND
SALE**

4Way Distribution Manifold

In-line Distribution Manifold

Double In-line Distribution Manifold

DOUBLE IN-LINE DISTRIBUTION MANIFOLD - long-range -

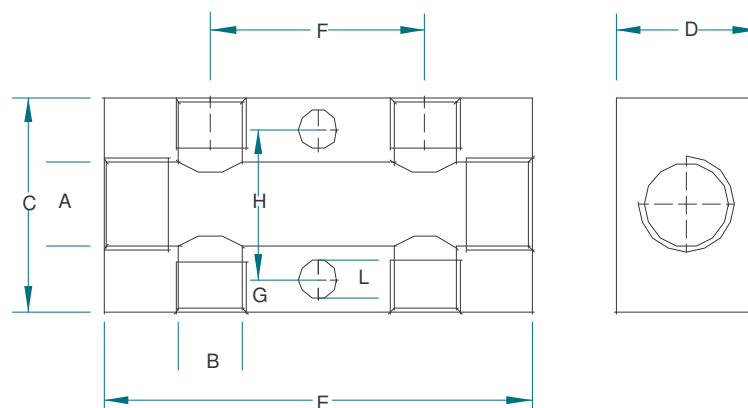
TYPE:

Inlets 1/4 Outlets 1/8
 Inlets 3/8 Outlets 1/8
 Inlets 3/8 Outlets 1/4
 Inlets 1/2 Outlets 1/4

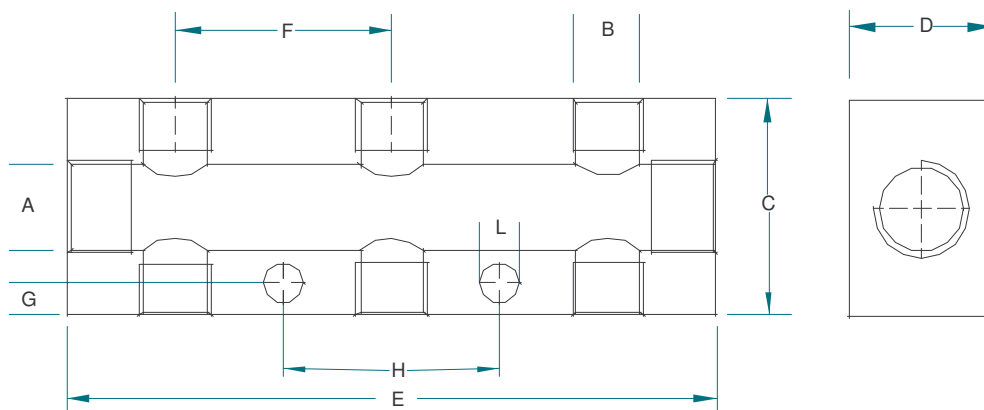
General specifications:

Material: Aluminium
 Treatment: tumbling
 On request: anodising

For special request please contact our technical dept. info@ifom.it



ITEM	A	B	C	D	E	F	G	H	L
SL.CC.2E1/4.2U1/8	G 1/4	G 1/8	30	20	60	30	4,5	21	5,5
SL.CC.2E3/8.2U1/8	G 3/8	G 1/8	40	20	66	30	6	28	5,5
SL.CC.2E3/8.2U1/4	G 3/8	G 1/4	40	20	72	36	6	28	6,5
SL.CC.2E1/2.2U1/4	G 1/2	G 1/4	40	30	80	36	6	28	6,5



ITEM	A	B	C	D	E	F	G	H	L
SL.CC.2E1/4.3U1/8	G 1/4	G 1/8	30	20	90	30	4,5	30	5,5
SL.CC.2E1/4.4U1/8	G 1/4	G 1/8	30	20	120	30	4,5	60	5,5
SL.CC.2E1/4.5U1/8	G 1/4	G 1/8	30	20	150	30	4,5	90	5,5
SL.CC.2E3/8.3U1/8	G 3/8	G 1/8	40	25	96	30	4,5	30	5,5
SL.CC.2E3/8.4U1/8	G 3/8	G 1/8	40	25	126	30	4,5	60	5,5
SL.CC.2E3/8.5U1/8	G 3/8	G 1/8	40	25	156	30	4,5	90	5,5
SL.CC.2E3/8.3U1/4	G 3/8	G 1/4	40	25	108	36	6	36	6,5
SL.CC.2E3/8.4U1/4	G 3/8	G 1/4	40	25	144	36	6	72	6,5
SL.CC.2E3/8.5U1/4	G 3/8	G 1/4	40	25	180	36	6	108	6,5
SL.CC.2E1/2.3U1/4	G 1/2	G 1/4	40	30	116	36	6	36	6,5
SL.CC.2E1/2.4U1/4	G 1/2	G 1/4	40	30	152	36	6	72	6,5
SL.CC.2E1/2.5U1/4	G 1/2	G 1/4	40	30	188	36	6	108	6,5

IN-LINE DISTRIBUTION MANIFOLD - long-range -

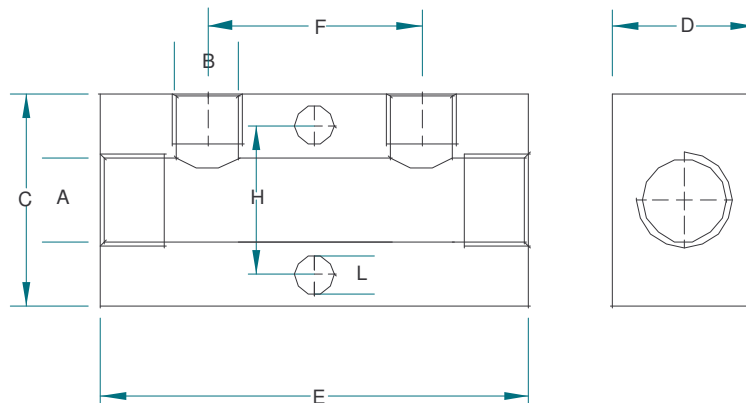
TYPE:

Inlets 1/4 Outlets 1/8
 Inlets 3/8 Outlets 1/8
 Inlets 3/8 Outlets 1/4
 Inlets 1/2 Outlets 1/4
 Inlets 1/2 Outlets 3/8

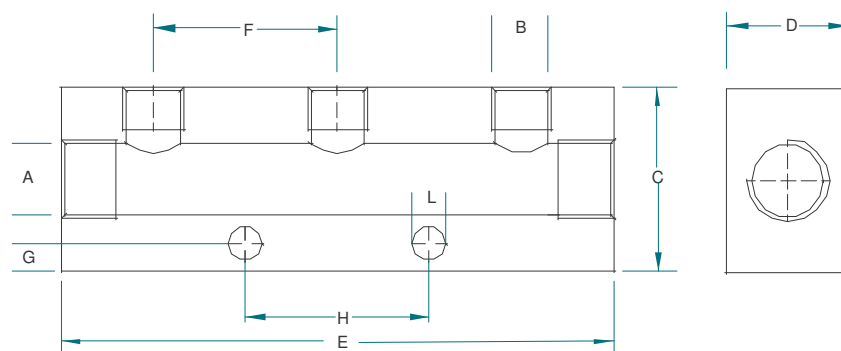
General specifications:

Material: Aluminium
 Treatment: tumbling
 On request: anodising

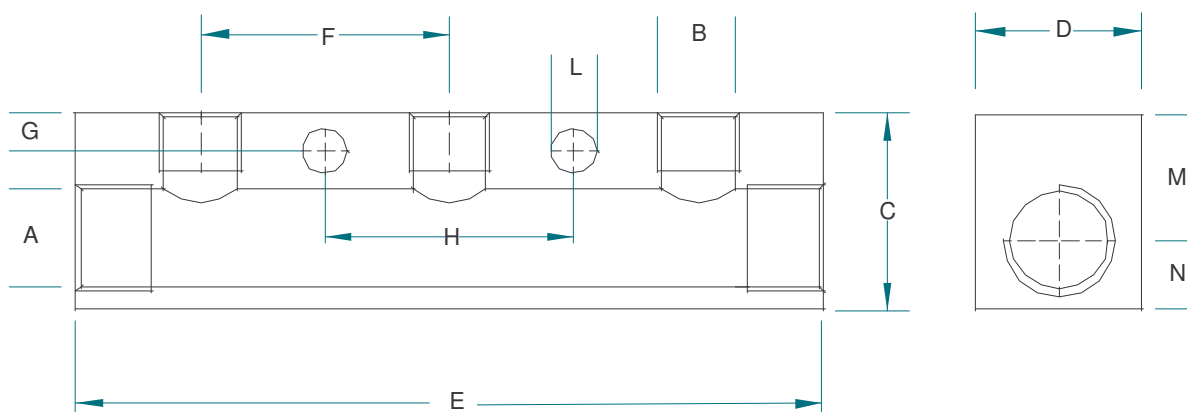
For special request please contact our technical dept. info@ifom.it



ITEM	A	B	C	D	E	F	G	H	L
SL.CL.2E1/4.2U1/8	G 1/4	G 1/8	30	20	60	30	4,5	21	5,5
SL.CL.2E3/8.2U1/8	G 3/8	G 1/8	40	20	66	30	4,5	31	5,5
SL.CL.2E3/8.2U1/4	G 3/8	G 1/4	40	20	72	36	6	28	6,5
SL.CL.2E1/2.2U1/4	G 1/2	G 1/4	40	30	80	36	6	28	6,5
SL.CL.2E1/2.2U3/8	G 1/2	G 3/8	40	30	90	40	6	28	6,5



ITEM	A	B	C	D	E	F	G	H	L
SL.CL.2E1/4.3U1/8	G 1/4	G 1/8	30	20	90	30	4,5	30	5,5
SL.CL.2E1/4.4U1/8	G 1/4	G 1/8	30	20	120	30	4,5	60	5,5
SL.CL.2E1/4.5U1/8	G 1/4	G 1/8	30	20	150	30	4,5	90	5,5
SL.CL.2E1/4.6U1/8	G 1/4	G 1/8	30	20	180	30	4,5	120	5,5



ITEM	A	B	C	D	E	F	G	H	L	M	N
SL.CL.2E3/8.3U1/8	G 3/8	G 1/8	30	25	96	30	4,5	30	5,5	18	12
SL.CL.2E3/8.4U1/8	G 3/8	G 1/8	30	25	126	30	4,5	60	5,5	18	12
SL.CL.2E3/8.5U1/8	G 3/8	G 1/8	30	25	156	30	4,5	90	5,5	18	12
SL.CL.2E3/8.6U1/8	G 3/8	G 1/8	30	25	186	30	4,5	120	5,5	18	12
SL.CL.2E3/8.3U1/4	G 3/8	G 1/4	30	25	108	36	6	36	6,5	18	12
SL.CL.2E3/8.4U1/4	G 3/8	G 1/4	30	25	144	36	6	72	6,5	18	12
SL.CL.2E3/8.5U1/4	G 3/8	G 1/4	30	25	180	36	6	108	6,5	18	12
SL.CL.2E3/8.6U1/4	G 3/8	G 1/4	30	25	216	36	6	144	6,5	18	12
SL.CL.2E1/2.3U1/4	G 1/2	G 1/4	35	28	116	36	6	36	6,5	21	14
SL.CL.2E1/2.4U1/4	G 1/2	G 1/4	35	28	152	36	6	72	6,5	21	14
SL.CL.2E1/2.5U1/4	G 1/2	G 1/4	35	28	188	36	6	108	6,5	21	14
SL.CL.2E1/2.6U1/4	G 1/2	G 1/4	35	28	224	36	6	144	6,5	21	14
SL.CL.2E1/2.3U3/8	G 1/2	G 3/8	35	28	130	40	6	40	6,5	21	14
SL.CL.2E1/2.4U3/8	G 1/2	G 3/8	35	28	170	40	6	80	6,5	21	14
SL.CL.2E1/2.5U3/8	G 1/2	G 3/8	35	28	210	40	6	120	6,5	21	14
SL.CL.2E1/2.6U3/8	G 1/2	G 3/8	35	28	250	40	6	160	6,5	21	14

IN-LINE DISTRIBUTION MANIFOLD with GROOVE

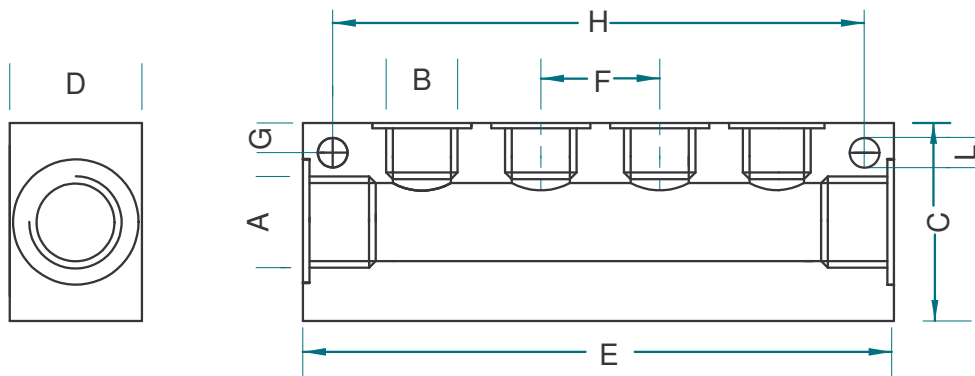
TYPE:

Inlets 1/8 Outlets M5
 Inlets 1/4 Outlets 1/8
 Inlets 3/8 Outlets 1/4
 Inlets 1/2 Outlets 3/8
 Inlets 1/2 Outlets 1/2

General specifications:

Material: Aluminium
 Treatment: tumbling
 On request: anodising

For special request please contact our technical dept. info@ifom.it



IN-LINE DISTRIBUTION MANIFOLD 2 INLETS 1/8 OUTLETS M5

ITEM	A	B	C	D	E	F	G	H	L
CL.2E1/8.2UM5	G 1/8	M 5	25	16	45	15	3,5	33	4,5
CL.2E1/8.3UM5	G 1/8	M 5	25	16	60	15	3,5	48	4,5
CL.2E1/8.4UM5	G 1/8	M 5	25	16	75	15	3,5	63	4,5
CL.2E1/8.5UM5	G 1/8	M 5	25	16	90	15	3,5	78	4,5
CL.2E1/8.6UM5	G 1/8	M 5	25	16	105	15	3,5	93	4,5

**IN-LINE DISTRIBUTION MANIFOLD
2 INLETS 1/4 OUTLETS 1/8**

ITEM	A	B	C	D	E	F	G	H	L
CL.2E1/4.2U1/8	G 1/4	G 1/8	30	20	54	18	4,5	45	4,5
CL.2E1/4.3U1/8	G 1/4	G 1/8	30	20	72	18	4,5	63	4,5
CL.2E1/4.4U1/8	G 1/4	G 1/8	30	20	90	18	4,5	81	4,5
CL.2E1/4.5U1/8	G 1/4	G 1/8	30	20	108	18	4,5	99	4,5
CL.2E1/4.6U1/8	G 1/4	G 1/8	30	20	126	18	4,5	117	4,5

**IN-LINE DISTRIBUTION MANIFOLD
2 INLETS 3/8 OUTLETS 1/4**

ITEM	A	B	C	D	E	F	G	H	L
CL.2E3/8.2U1/4	G 3/8	G 1/4	40	25	68	24	6	51	5,5
CL.2E3/8.3U1/4	G 3/8	G 1/4	40	25	92	24	6	75	5,5
CL.2E3/8.4U1/4	G 3/8	G 1/4	40	25	116	24	6	99	5,5
CL.2E3/8.5U1/4	G 3/8	G 1/4	40	25	140	24	6	123	5,5
CL.2E3/8.6U1/4	G 3/8	G 1/4	40	25	164	24	6	147	5,5

**IN-LINE DISTRIBUTION MANIFOLD
2 INLETS 1/2 OUTLETS 3/8**

ITEM	A	B	C	D	E	F	G	H	L
CL.2E1/2.2U3/8	G 1/2	G 3/8	50	30	78	26	6,5	59	5,5
CL.2E1/2.3U3/8	G 1/2	G 3/8	50	30	104	26	6,5	85	5,5
CL.2E1/2.4U3/8	G 1/2	G 3/8	50	30	130	26	6,5	111	5,5
CL.2E1/2.5U3/8	G 1/2	G 3/8	50	30	156	26	6,5	137	5,5
CL.2E1/2.6U3/8	G 1/2	G 3/8	50	30	182	26	6,5	163	5,5

**IN-LINE DISTRIBUTION MANIFOLD
2 INLETS 1/2 OUTLETS 1/2**

ITEM	A	B	C	D	E	F	G	H	L
CL.2E1/2.2U1/2	G 1/2	G 1/2	50	30	102	34	6,5	83	5,5
CL.2E1/2.3U1/2	G 1/2	G 1/2	50	30	136	34	6,5	117	5,5
CL.2E1/2.4U1/2	G 1/2	G 1/2	50	30	170	34	6,5	151	5,5
CL.2E1/2.5U1/2	G 1/2	G 1/2	50	30	204	34	6,5	185	5,5
CL.2E1/2.6U1/2	G 1/2	G 1/2	50	30	238	34	6,5	219	5,5

DOUBLE IN-LINE DISTRIBUTION MANIFOLD with GROOVE

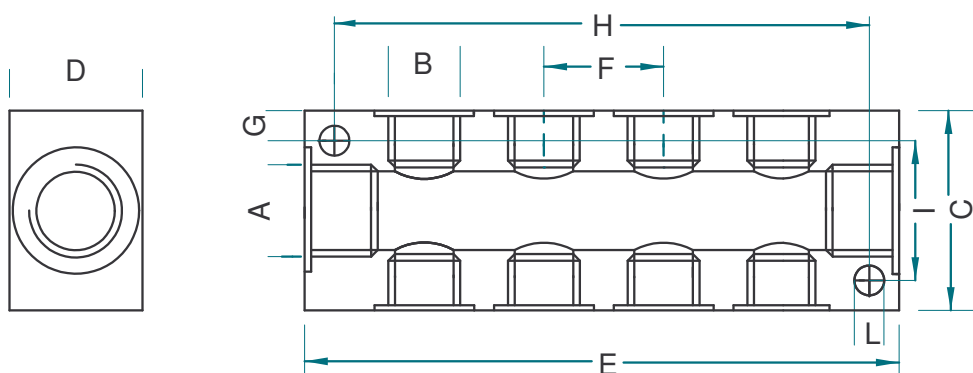
TYPE:

Inlets 1/8 Outlets M5
 Inlets 1/4 Outlets 1/8
 Inlets 3/8 Outlets 1/4
 Inlets 1/2 Outlets 3/8
 Inlets 1/2 Outlets 1/2

General specifications:

Material: Aluminium
 Treatment: tumbling
 On request: anodising

For special request please contact our technical dept. info@ifom.it



DOUBLE IN-LINE DISTRIBUTION MANIFOLD 2 INLETS 1/8 OUTLETS M 5

ITEM	A	B	C	D	E	F	G	H	I	L
CC.2E1/8.2UM5	G 1/8	M 5	25	16	45	15	3,5	33	18	4,5
CC.2E1/8.3UM5	G 1/8	M 5	25	16	60	15	3,5	48	18	4,5
CC.2E1/8.4UM5	G 1/8	M 5	25	16	75	15	3,5	63	18	4,5
CC.2E1/8.5UM5	G 1/8	M 5	25	16	90	15	3,5	78	18	4,5
CC.2E1/8.6UM5	G 1/8	M 5	25	16	105	15	3,5	93	18	4,5

**DOUBLE IN-LINE DISTRIBUTION MANIFOLD
2 INLETS 1/4 OUTLETS 1/8**

ITEM	A	B	C	D	E	F	G	H	I	L
CC.2E1/4.2U1/8	G 1/4	G 1/8	30	20	54	18	4,5	45	21	4,5
CC.2E1/4.3U1/8	G 1/4	G 1/8	30	20	72	18	4,5	63	21	4,5
CC.2E1/4.4U1/8	G 1/4	G 1/8	30	20	90	18	4,5	81	21	4,5
CC.2E1/4.5U1/8	G 1/4	G 1/8	30	20	108	18	4,5	99	21	4,5
CC.2E1/4.6U1/8	G 1/4	G 1/8	30	20	126	18	4,5	117	21	4,5

**DOUBLE IN-LINE DISTRIBUTION MANIFOLD
2 INLETS 3/8 OUTLETS 1/4**

ITEM	A	B	C	D	E	F	G	H	I	L
CC.2E3/8.2U1/4	G 3/8	G 1/4	40	25	68	24	6	51	28	5,5
CC.2E3/8.3U1/4	G 3/8	G 1/4	40	25	92	24	6	75	28	5,5
CC.2E3/8.4U1/4	G 3/8	G 1/4	40	25	116	24	6	99	28	5,5
CC.2E3/8.5U1/4	G 3/8	G 1/4	40	25	140	24	6	123	28	5,5
CC.2E3/8.6U1/4	G 3/8	G 1/4	40	25	164	24	6	147	28	5,5

**DOUBLE IN-LINE DISTRIBUTION MANIFOLD
2 INLETS 1/2 OUTLETS 3/8**

ITEM	A	B	C	D	E	F	G	H	I	L
CC.2E1/2.2U3/8	G 1/2	G 3/8	50	30	78	26	6,5	59	37	5,5
CC.2E1/2.3U3/8	G 1/2	G 3/8	50	30	104	26	6,5	85	37	5,5
CC.2E1/2.4U3/8	G 1/2	G 3/8	50	30	130	26	6,5	111	37	5,5
CC.2E1/2.5U3/8	G 1/2	G 3/8	50	30	156	26	6,5	137	37	5,5
CC.2E1/2.6U3/8	G 1/2	G 3/8	50	30	182	26	6,5	163	37	5,5

**DOUBLE IN-LINE DISTRIBUTION MANIFOLD
2 INLETS 1/2 OUTLETS 1/2**

ITEM	A	B	C	D	E	F	G	H	I	L
CC.2E1/2.2U1/2	G 1/2	G 1/2	50	30	102	34	6,5	83	37	5,5
CC.2E1/2.3U1/2	G 1/2	G 1/2	50	30	136	34	6,5	117	37	5,5
CC.2E1/2.4U1/2	G 1/2	G 1/2	50	30	170	34	6,5	151	37	5,5
CC.2E1/2.5U1/2	G 1/2	G 1/2	50	30	204	34	6,5	185	37	5,5
CC.2E1/2.6U1/2	G 1/2	G 1/2	50	30	238	34	6,5	219	37	5,5

4-WAYS DISTRIBUTION MANIFOLD with GROOVE

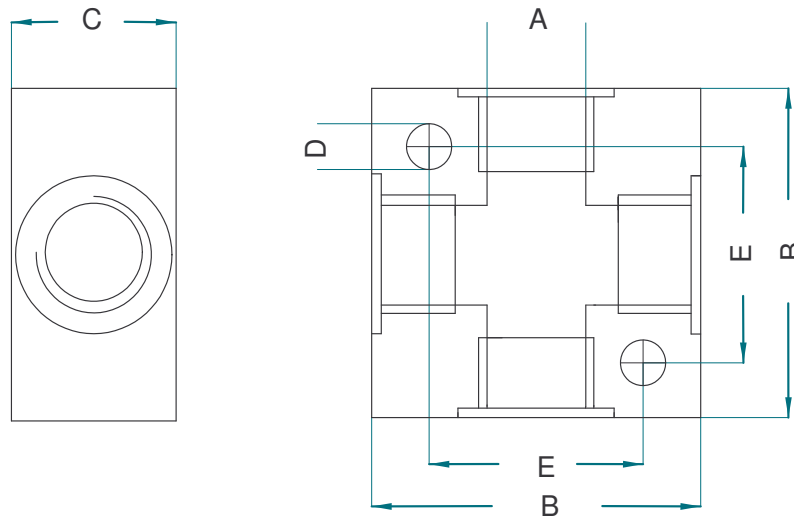
TYPE:

Tee-cross Manifold 1/8
Tee-cross Manifold 1/4
Tee-cross Manifold 3/8
Tee-cross Manifold 1/2

General specifications:

Material: Aluminium
Treatment: tumbling
On request: anodising

For special request please contact our technical dept. info@ifom.it



TEE_CROSS MANIFOLD;TREATMENT: TUMBLING IN NATURAL COLOR

ITEM	A	B	C	D	E
RC - 1/8 N	G 1/8	25	16	4,5	17
RC - 1/4 N	G 1/4	40	20	5,5	26
RC - 3/8 N	G 3/8	40	25	5,5	26
RC - 3/8-2 N	G 3/8	50	25	5,5	34
RC - 1/2 N	G 1/2	50	30	5,5	34

TEE_CROSS MANIFOLD;TREATMENT: ANODIZING IN NATURAL COLOR

ITEM	A	B	C	D	E
RC - 1/8AN.N	G 1/8	25	16	4,5	17
RC - 1/4 AN.N	G 1/4	40	20	5,5	26
RC - 3/8 AN.N	G 3/8	40	25	5,5	26
RC - 3/8-2 AN.N	G 3/8	50	25	5,5	34
RC - 1/2 AN.N	G 1/2	50	30	5,5	34